

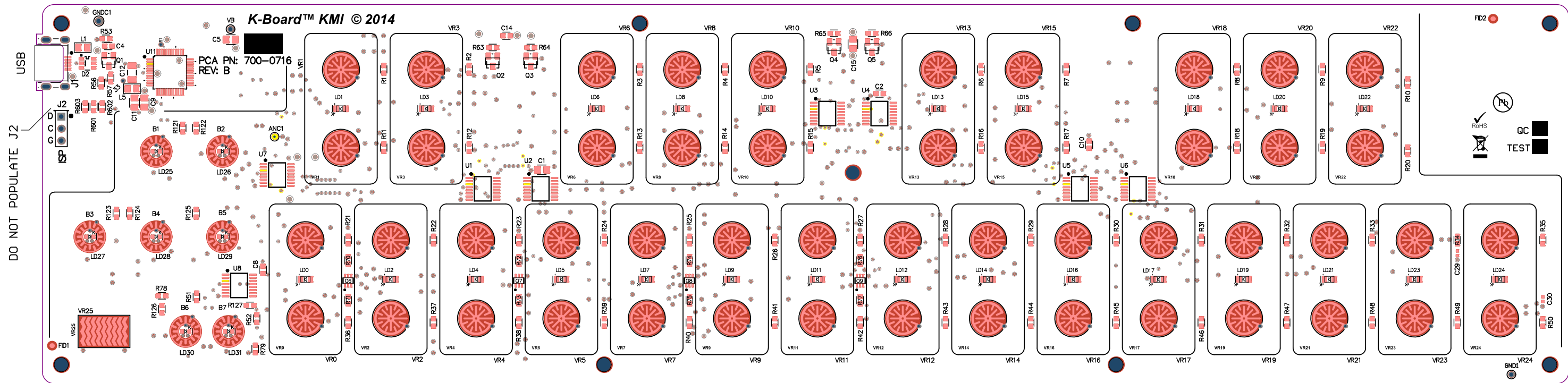
GENERAL FABRICATION SPECIFICATIONS AND NOTES

1. MATERIAL:
1. FR4, Tg 125C - 140C, Higher temp OK at CM choice
0.062 INCHES THICK
2. BASE LAMINATE SHALL HAVE A FLAMMABILITY RATING OF 94V-0 OR BETTER, PERMANENTLY PRINTED ON PCB ALONG WITH MFG'S UL LOGO
3. COPPER WEIGHT SHOWN IN STACKUP IS FINISHED WEIGHT
NOTE: EITHER 1/2 Oz OR 1 Oz BASE WEIGHT Cu IS OK, BUT PLATING MUST BE 1 Oz MIN
2. NUMBER OF LAYERS: 2 1. SEE LAYER STACKUP
3. SURFACE FINISH: ENIG (do not substitute non-gold finish)
4. HOLES:
1. ALL HOLES THRU PLATED UNLESS OTHERWISE SPECIFIED.
2. ALL SIZES ARE FINISHED SIZES AFTER PLATING IF PLATED.
3. THRU PLATE THICKNESS: 0.001 INCHES MINIMUM.
4. HOLE SIZE TOLERANCE AFTER THRU PLATE: +-0.003 INCHES.
5. NON PLATED HOLES SHOWN BY 'NPTH' IN *.DRR FILE.
6. OTHER HOLE FEATURES MARKED BY X BELOW IF PRESENT:
☒ HOLES, NON-PLATED ☒ SLOTS, PLATED ☐ SLOTS, NON-PLATED
5. SOLDERMASK: LPI, GREEN, TOP AND BOTTOM
6. LEGEND: TOP ☒ WHITE BOTTOM ☐ (NONE)
7. BOARD OUTLINE PROFILE
GENERAL PROFILE TOLERANCE +-0.005 IN.
FOLLOW OUTLINE ON *.GM1, FEATURES PRESENT IF MARKED BY X BELOW:
☐ SIMPLE RECTANGLE ☒ CONTOUR ROUTING, RADIUS ON CORNERS
☐ U-SCORE GROOVES ☐ INTERNAL CUT-OUTS
8. ELECTRICAL TEST: REQUIRED - 100%
9. MISC NOTES:
1. DATA IS IN GERBER FORMAT, INTERPRET PER EIA Std RS-274X.
2. DATA SHOWS PCB AS VIEWED FROM PRIMARY SIDE PER IPC-D-325A.
3. FINISHED BOARDS TO COMPLY WITH IPC-A-600E, CLASS II.
4. BOW OR TWIST SHALL NOT EXCEED THE REQUIREMENTS IN IPC 6012A SECTION 3.4.4 IN ACCORDANCE WITH IPC-TM-650, METHOD 2.4.22 .
5. IF DESICCANT IS INCLUDED IT MUST NOT CONTACT THE PCB.
NOTE! PCB TO BE AS FLAT AND FREE OF WARP AS PRACTICAL
10. RoHS: ☒ IF BOX IS MARKED WITH X THEN ALL MATERIALS TO BE COMPLIANT WITH THE EU RoHS DIRECTIVE, CERTIFICATE TO BE SUPPLIED

Symbol	Hit Count	Finished Hole Size	Plated	Hole Type	Physical Length	Rout Path Length
⌘	2	0.800mm (31.50mil)	PTH	Slot	1.450mm (57.09mil)	0.650mm (25.59mil)
◇	2	0.800mm (31.50mil)	PTH	Slot	1.650mm (64.96mil)	0.850mm (33.46mil)
▽	7	0.813mm (32.00mil)	PTH	Round		
⊕	9	2.800mm (110.24mil)	NPTH	Round		
☆	18	0.940mm (37.00mil)	PTH	Round		
□	224	0.350mm (13.78mil)	PTH	Round		
○	400	0.500mm (19.69mil)	PTH	Round		
	662 Total					

LAYER STACKUP SPECIFICATIONS		LAYER STACK UP ORDER MAY NOT BE ADJUSTED BY FABRICATOR		
		LAYER NAME (<#>	FILENAME	Cu T
		TOP LEGEND	*.GTO	
		TOP SOLDERMASK	*.GTS	
		TOP LAYER (<1>	*.GTL	0.5 oz. Cu BASE +1 oz. Cu PLATE (see Note 1.3)
		BOTTOM LAYER (<4>	*.GBL	0.5 oz. Cu BASE +1 oz. Cu PLATE (see Note 1.3)
		BOTTOM SOLDERMASK	*.GBS	
		xxx	xxx	
		BOARD OUTLINE	*.GM1	
		FAB SPECS	*.GM7	
		NC DRILL FILE(s)	*.TXT (<2 FILES WHEN WHEN SLOTS>	
		DRILL REPORT	*.DRR	
		DRILL DRAWING	*.GD1	

INTEGRATED CONTROLS, INC.			
TEL: 415-647-0480 FAX: 415-647-3003 EMAIL: PCBDESIGN@INTEGRATEDCONTROLSINC.COM			
K-Board			
ENGINEER: D.S.		TITLE: FABRICATION DRAWING	
PCB DESIGNER: D.S.		FAB, PCB, K-Board, 2L	
PLOT DATE: 8/21/2014	RELEASE: IN PROGRESS	FAB P/N: 600-0716	REV: B
CREATION DATE: AUG-15-2014	LAST REVISED: AUG-21-2014	FILENAME: 600-0716_B.PcbDoc	



ASSY INSTRUCTIONS:

- 1) ALL MATERIALS TO BE RoHS
- 2) NO PARTS ON BOTTOM, NO THROUGH HOLE PARTS
- 3) EXPOSED AREAS WITHIN VR0 – VR24 AND B0–B7 TO BE FREE OF SOLDER AND CLEAN, NO PART FOR VR0–VR24 IS SUPPLIED FOR FIRST PASS ASSY SOLDERING OPERATION
- 4) FINISHED ASSY TO BE BE AS FLAT AND FREE OF TWIST AND BOW AS PRACTICAL

LAYER NAME: Top Assembly with Reflectors

PLOT FILE: Top Assembly with Reflectors

APP BUILD No.: 14.3.14.34663

ASSY DWG – TOP SIDE

P/N: 700-0716 REV: B

TITLE: K-Board

REV DATE: AUG-21-2014

PRINT DATE: 8/21/2014

INTEGRATED CONTROLS, INC.
2851 21st ST., SAN FRANCISCO, CA 94110

4) FINISHED ASSY TO BE AS FLAT AND FREE OF TWIST AND BOW AS PRACTICAL
SOLDER AND CLEAN, NO PART FOR VR0-VR24 IS SUPPLIED FOR FIRST PASS ASSY SOLDERING OPERATION
2) EXPOSED AREAS WITHIN VR0 - VR24 AND B0-B7 TO BE FREE OF
2) NO PARTS ON BOTTOM, NO THROUGH HOLE PARTS
1) ALL MATERIALS TO BE ROHS

ASSY INSTRUCTIONS:

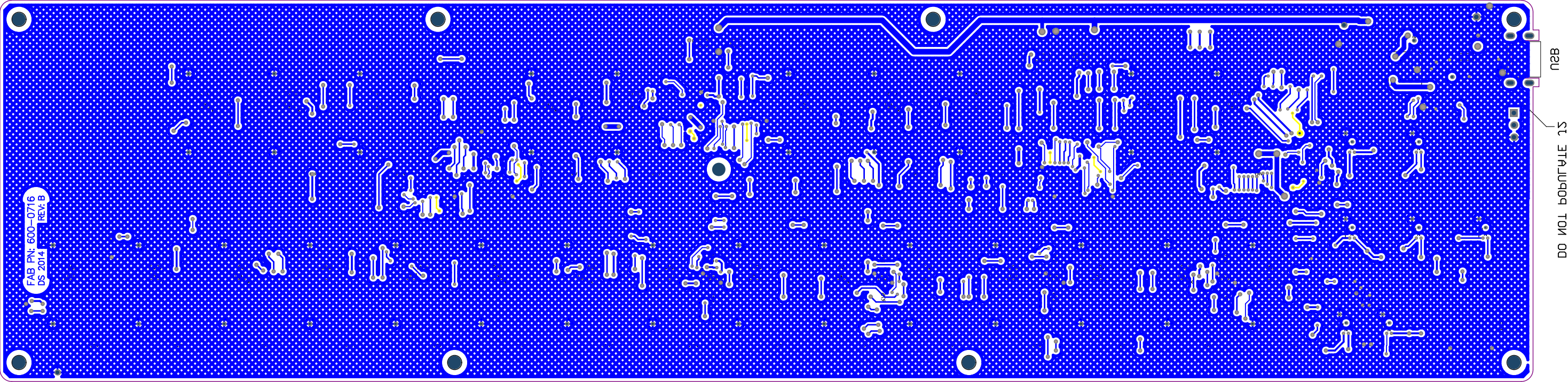
APP BUILD No.: 1431434003

2881 21st ST., SAN FRANCISCO, CA 94110	
INTEGRATED CONTROLS, INC.	
REV DATE: AUG-21-2014	PRINT DATE: 8-21-2014
TITLE: K-Board	
P\N: 700-0716 REV: B	
ASSY DWG - TOP SIDE	

PLOT FILE: Bottom Traces

LAYER NAME: Bottom Traces

BOTTOM VIEW TRACES, NO PARTS ON BOTTOM



DO NOT SOLDATE TOP DD

2B

FAB PN: 600-0716

US 2014

REV: B

