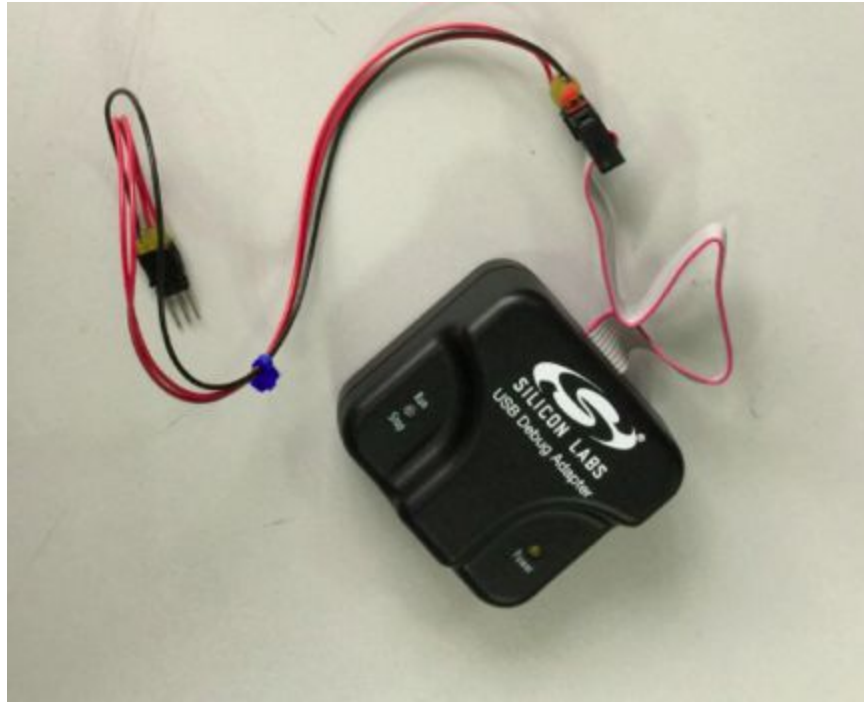


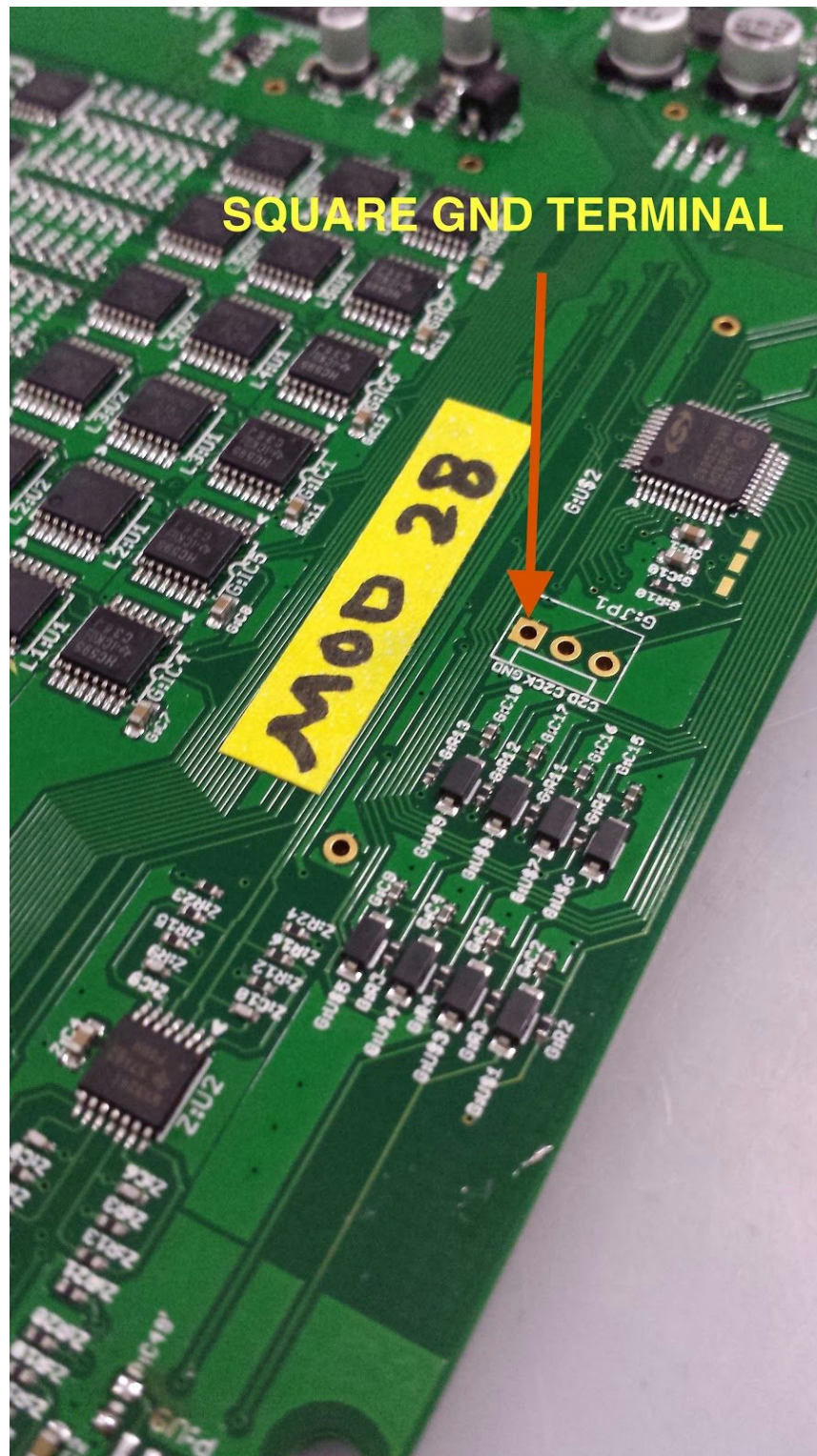
### KMix 0909 Programming:

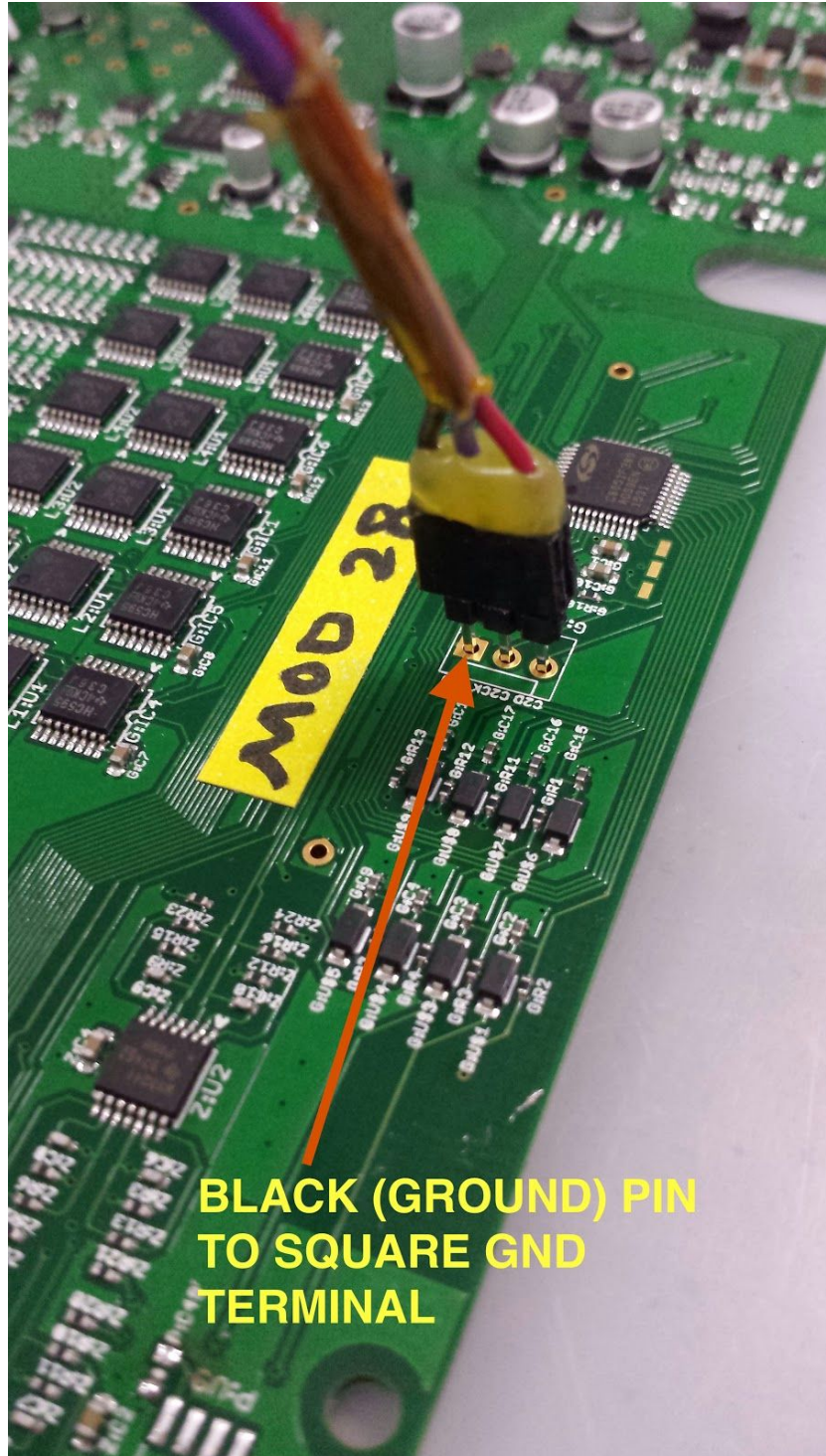
- Plug in the Silicon Labs USB Debug Adapter to the USB port on your computer.



- Connect 3 pin programming adapter to J3, black wire as pictured above.

- Connect SILabs USB Debugger to 0909 board as shown below:



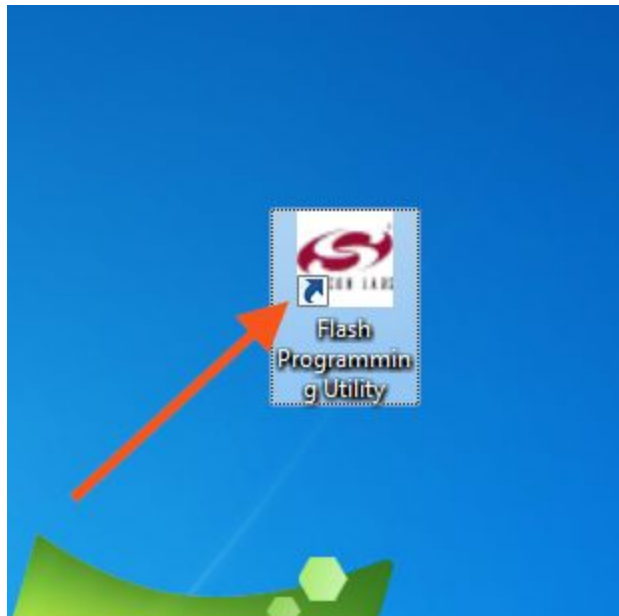


**BLACK (GROUND) PIN  
TO SQUARE GND  
TERMINAL**

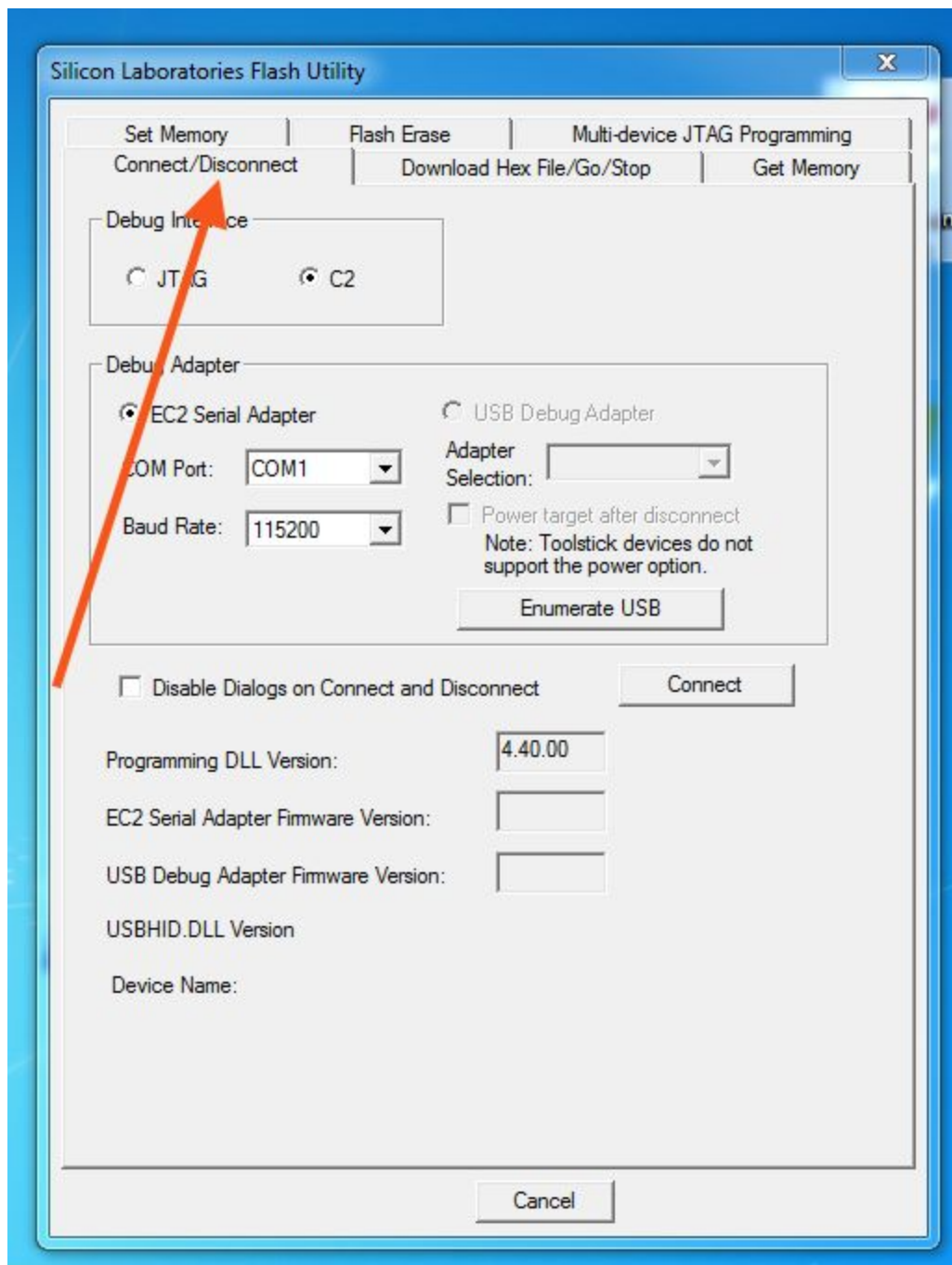


### Flash Programming Utility Instructions 0909:

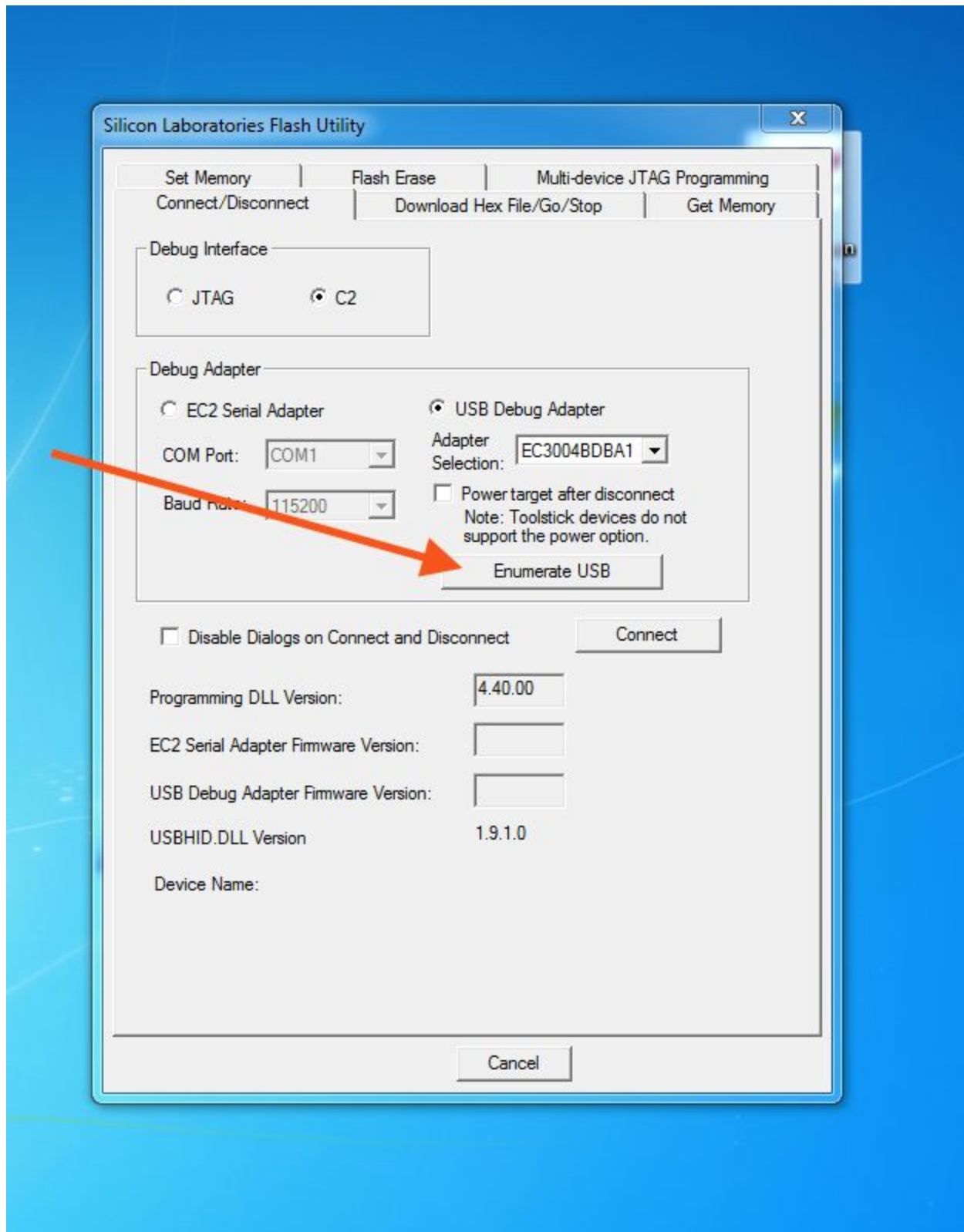
- Open the Flash Programming Utility  
(<https://www.silabs.com/Support%20Documents/Software/utildll.exe>).



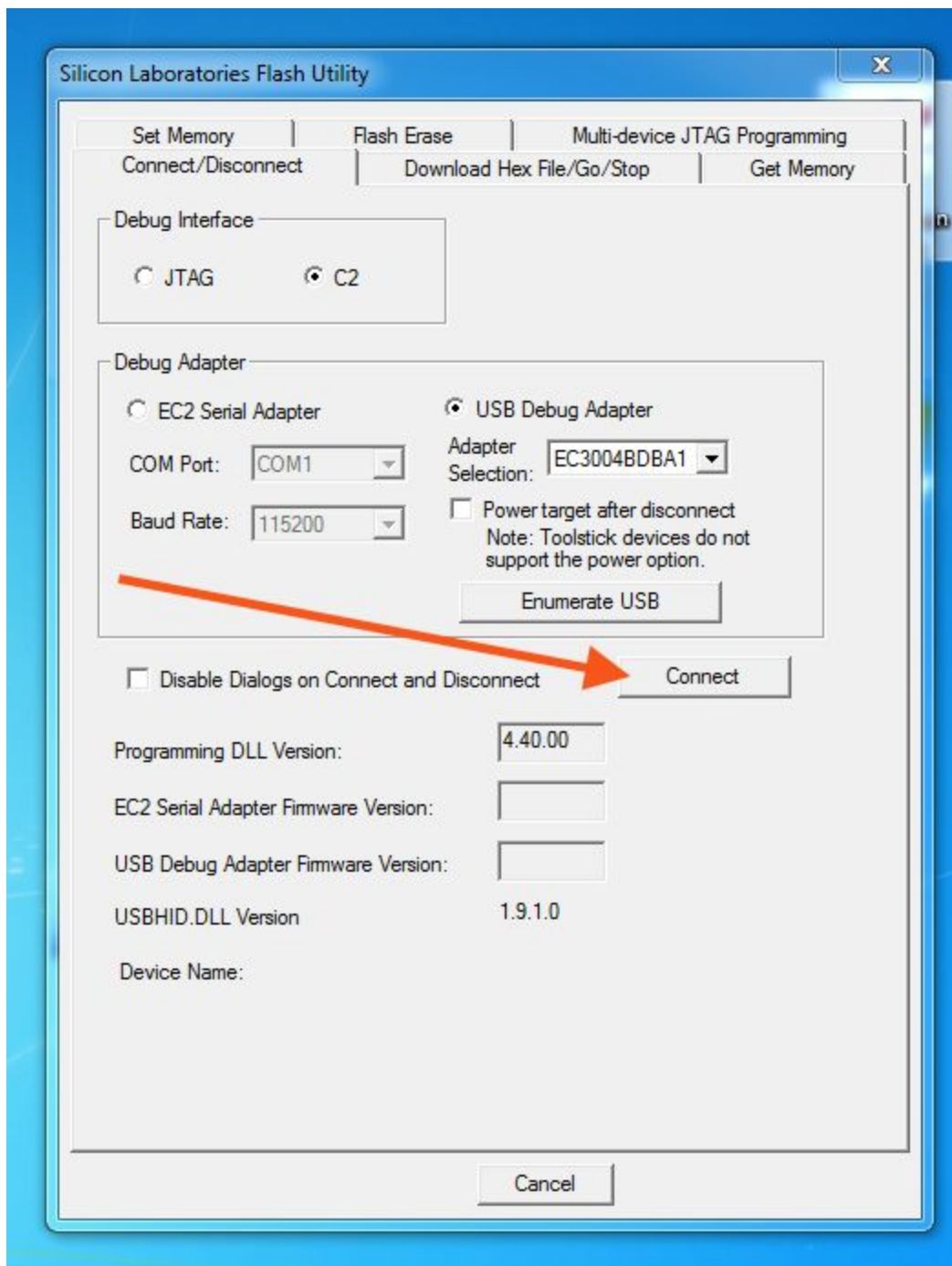
- Click on the "Connect/Disconnect" tab.

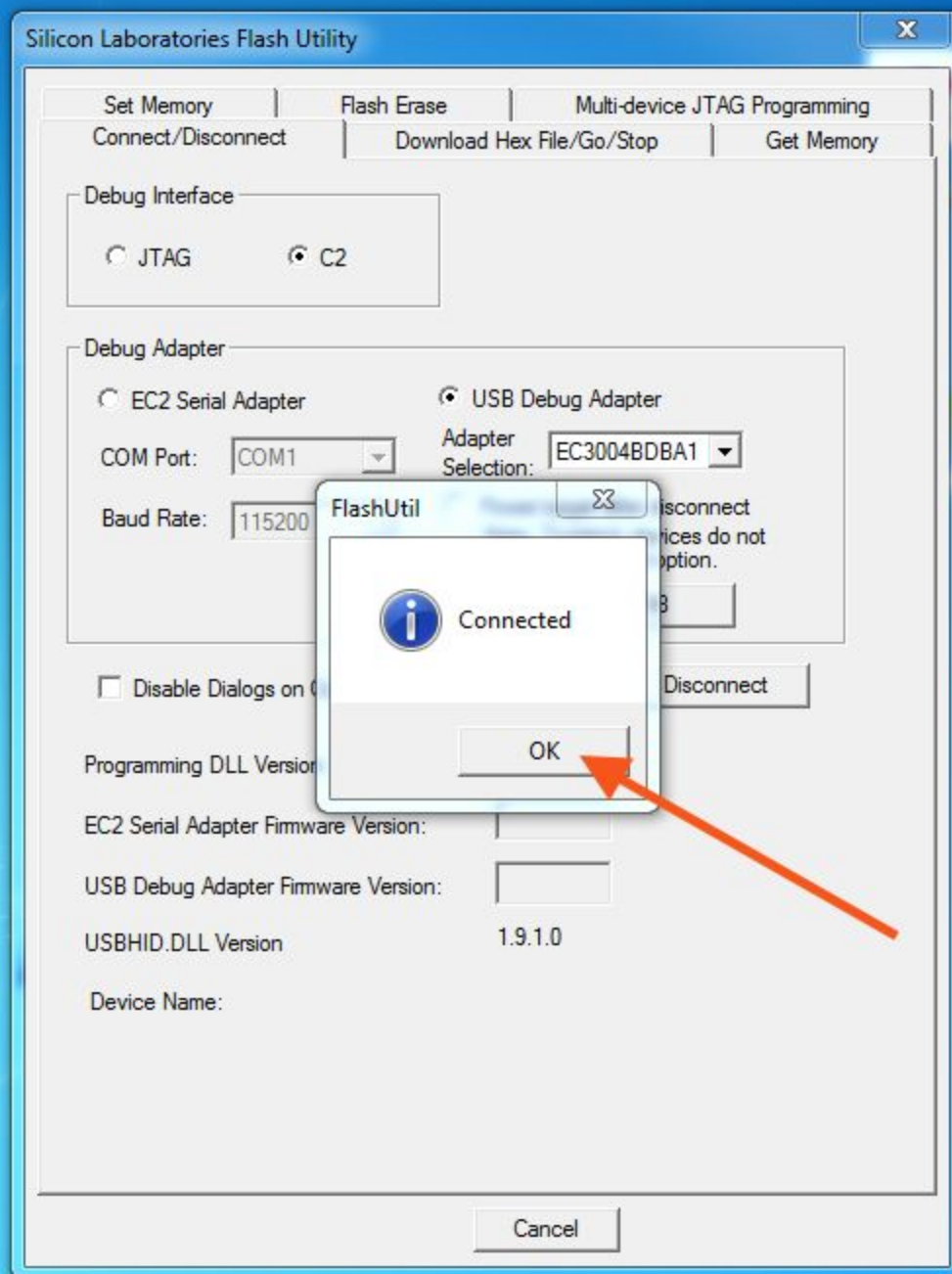


- Click on "Enumerate USB."



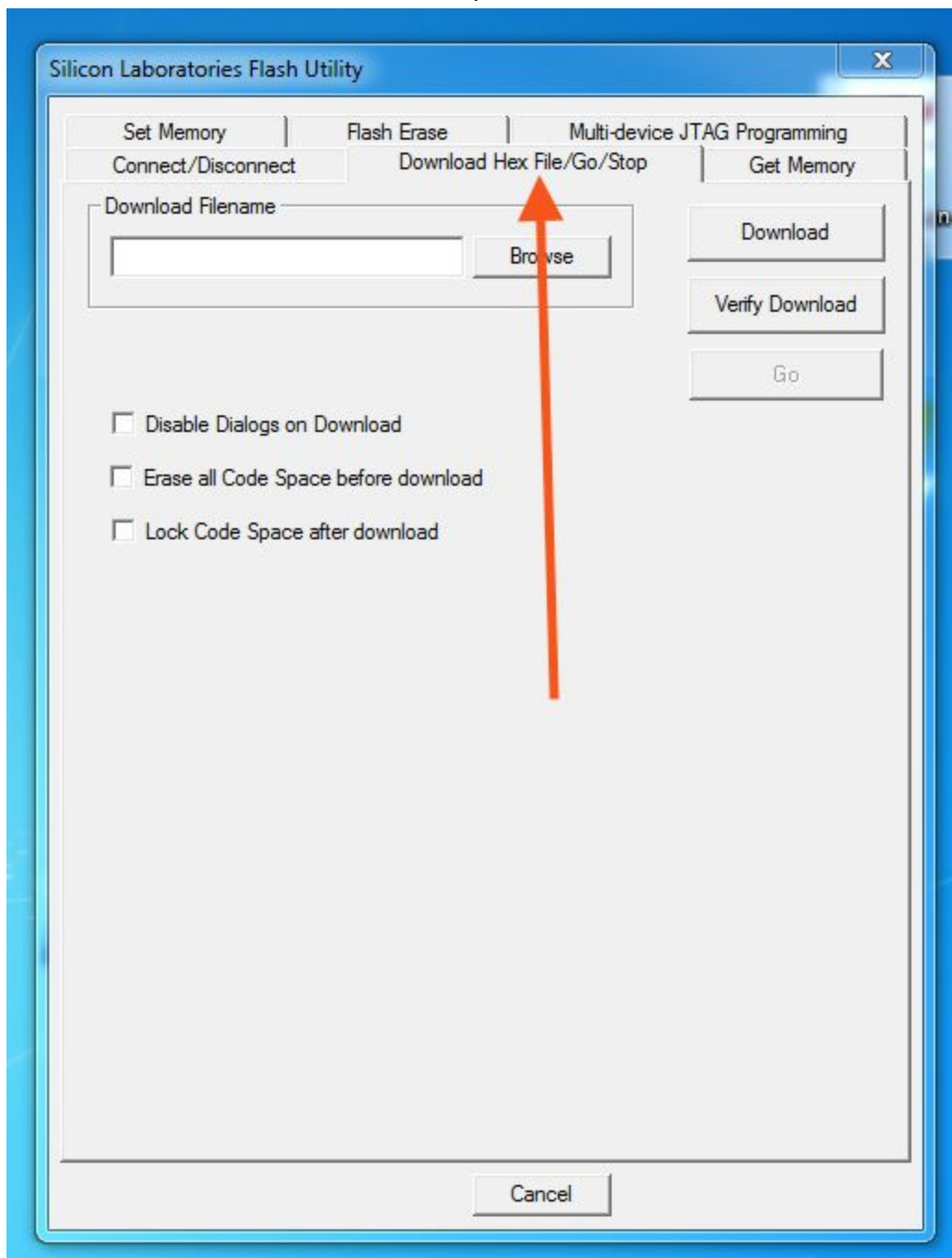
- Click on the “Connect” button.



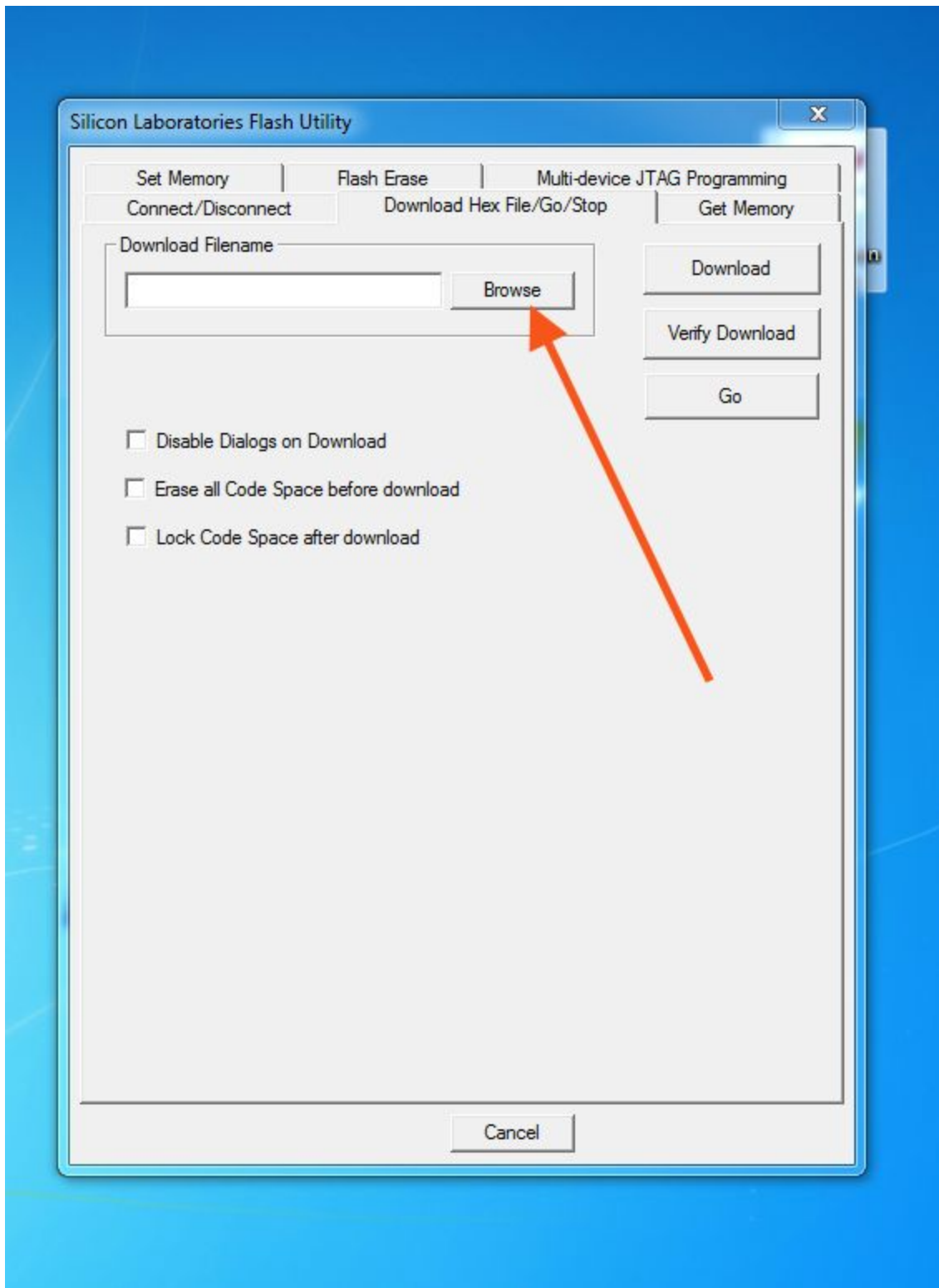


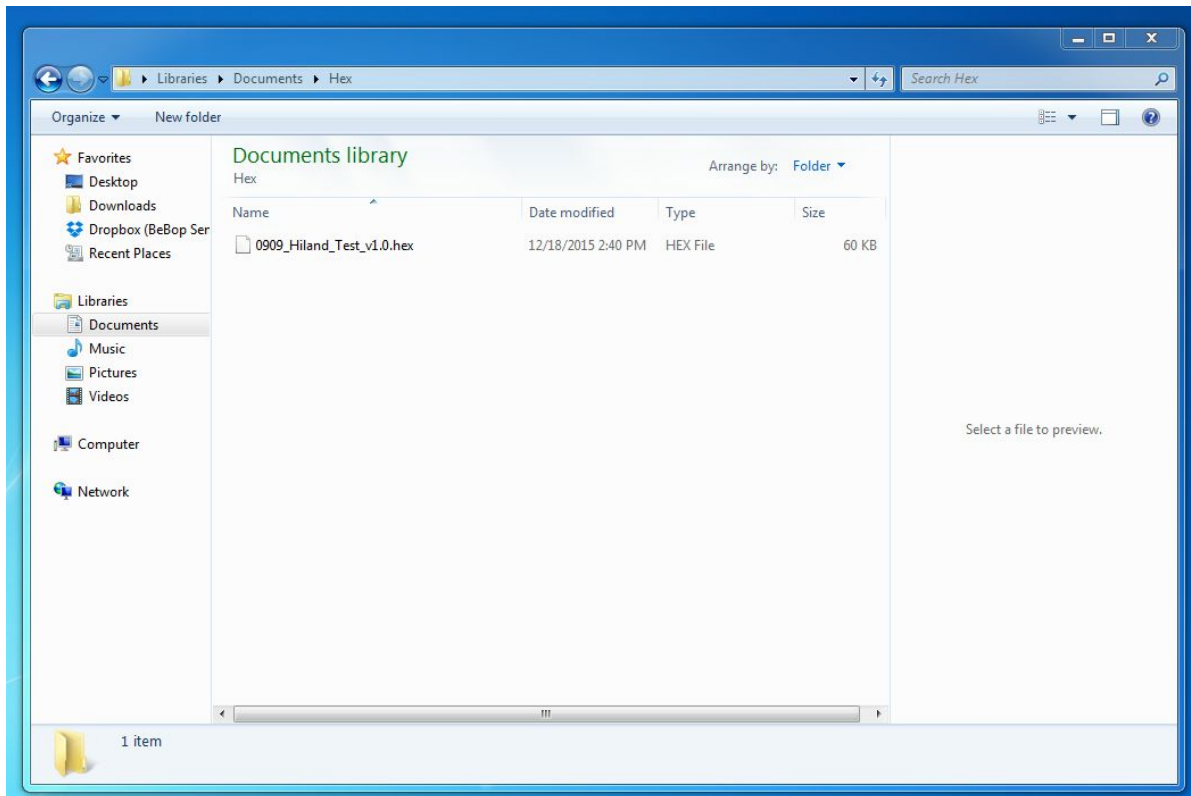


- Click on the “Download Hex File/Go/Stop” tab.

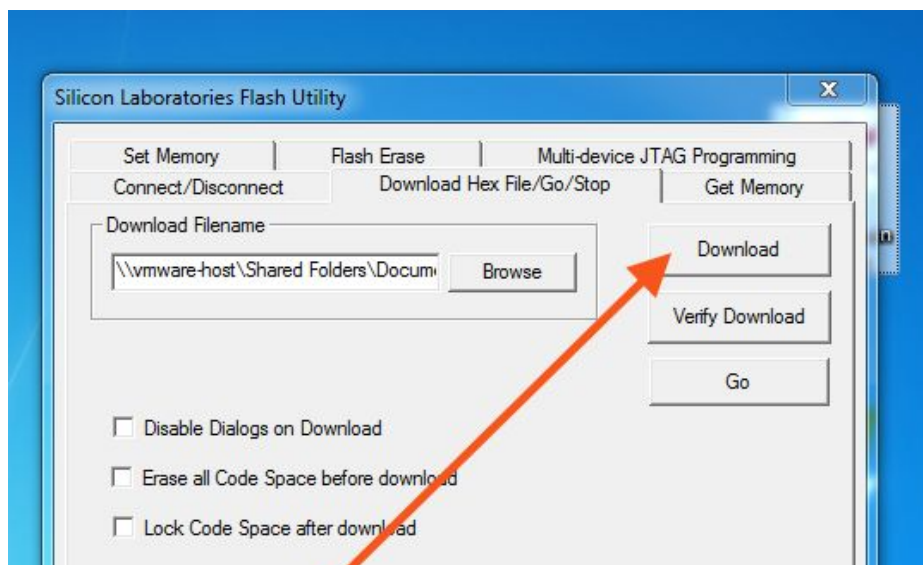


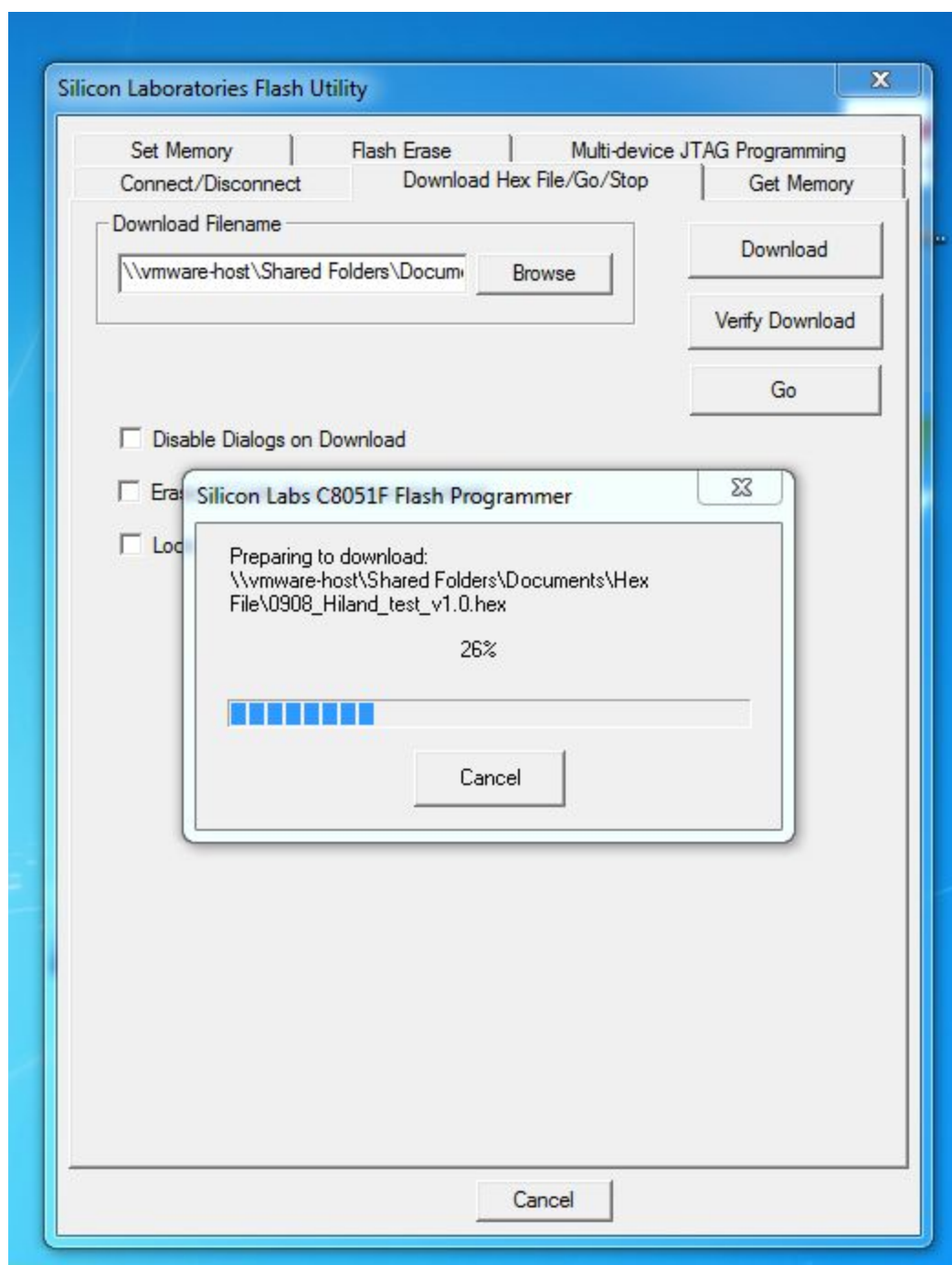
- Click "Browse." A dialog box will appear – select the 0909 Test "hex" file from the directory where it is located on your hard drive.



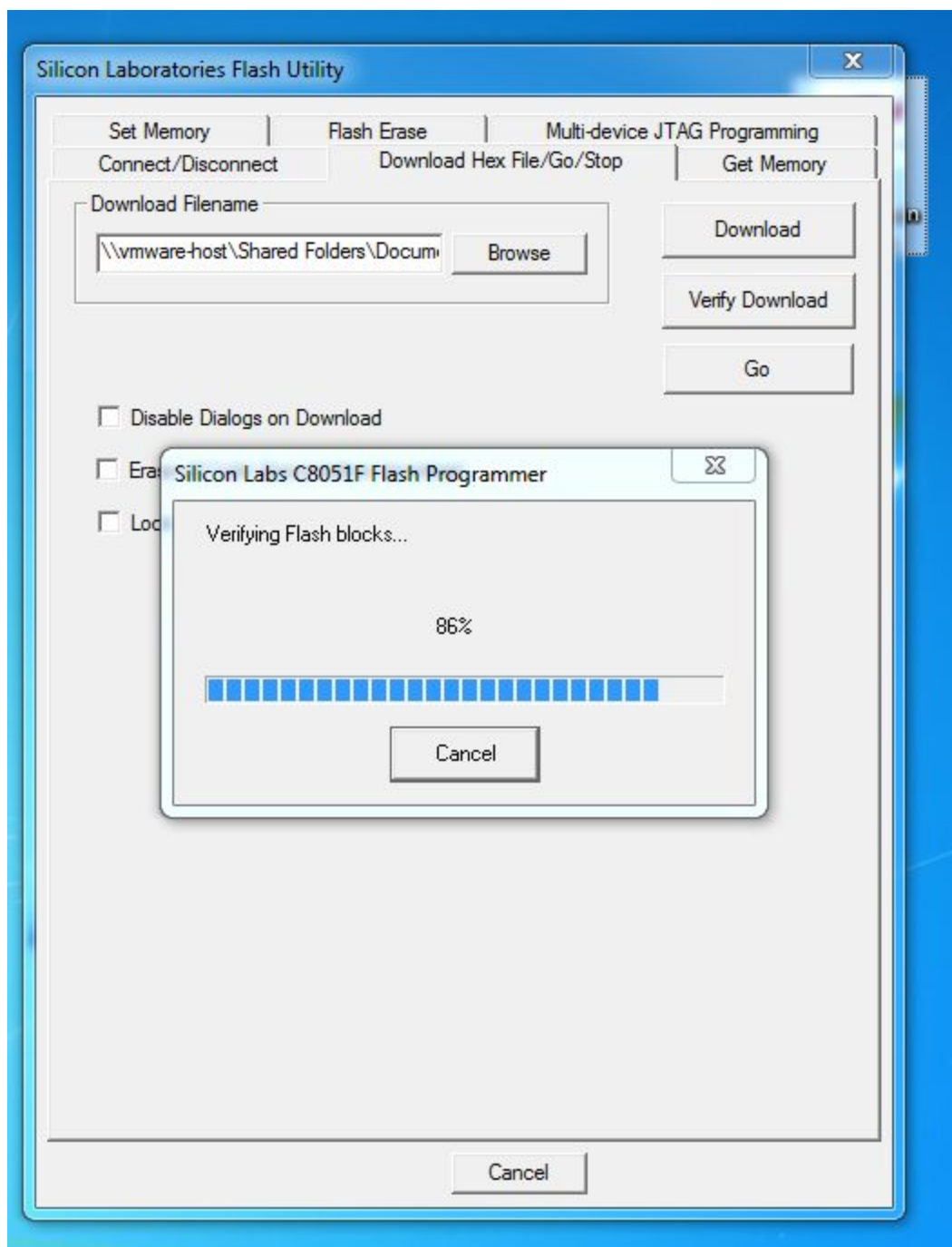


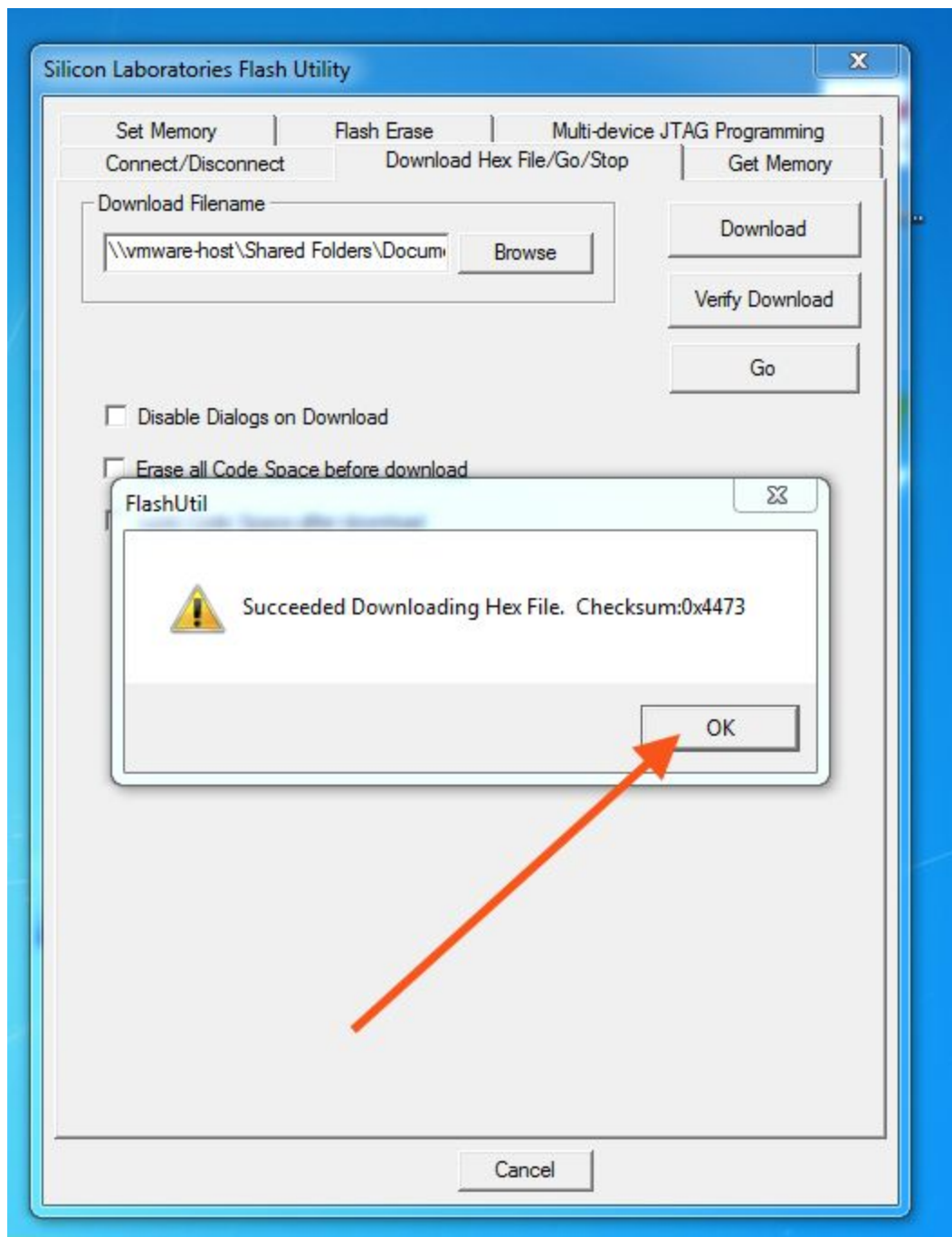
- Click the "Download" button.



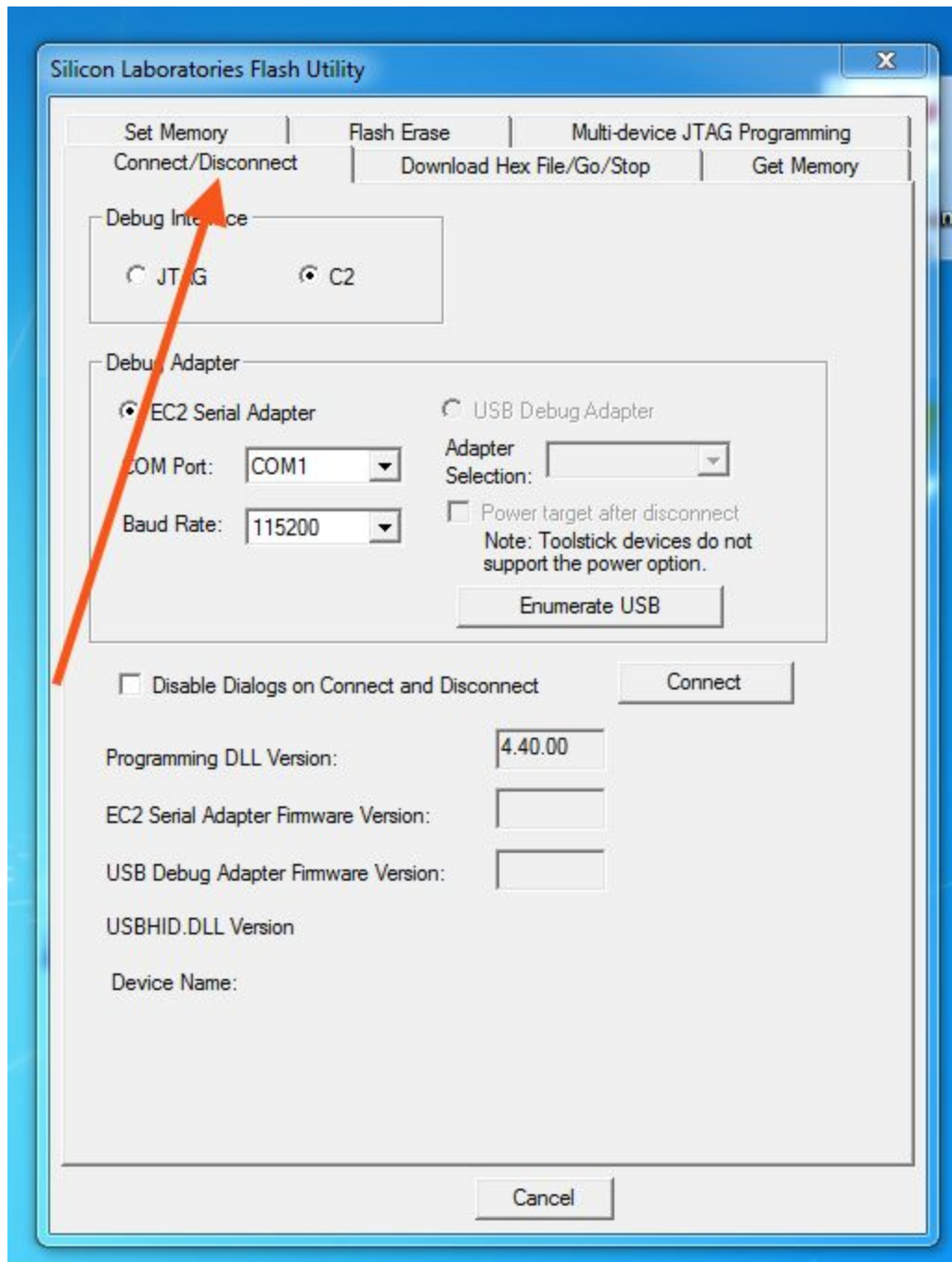


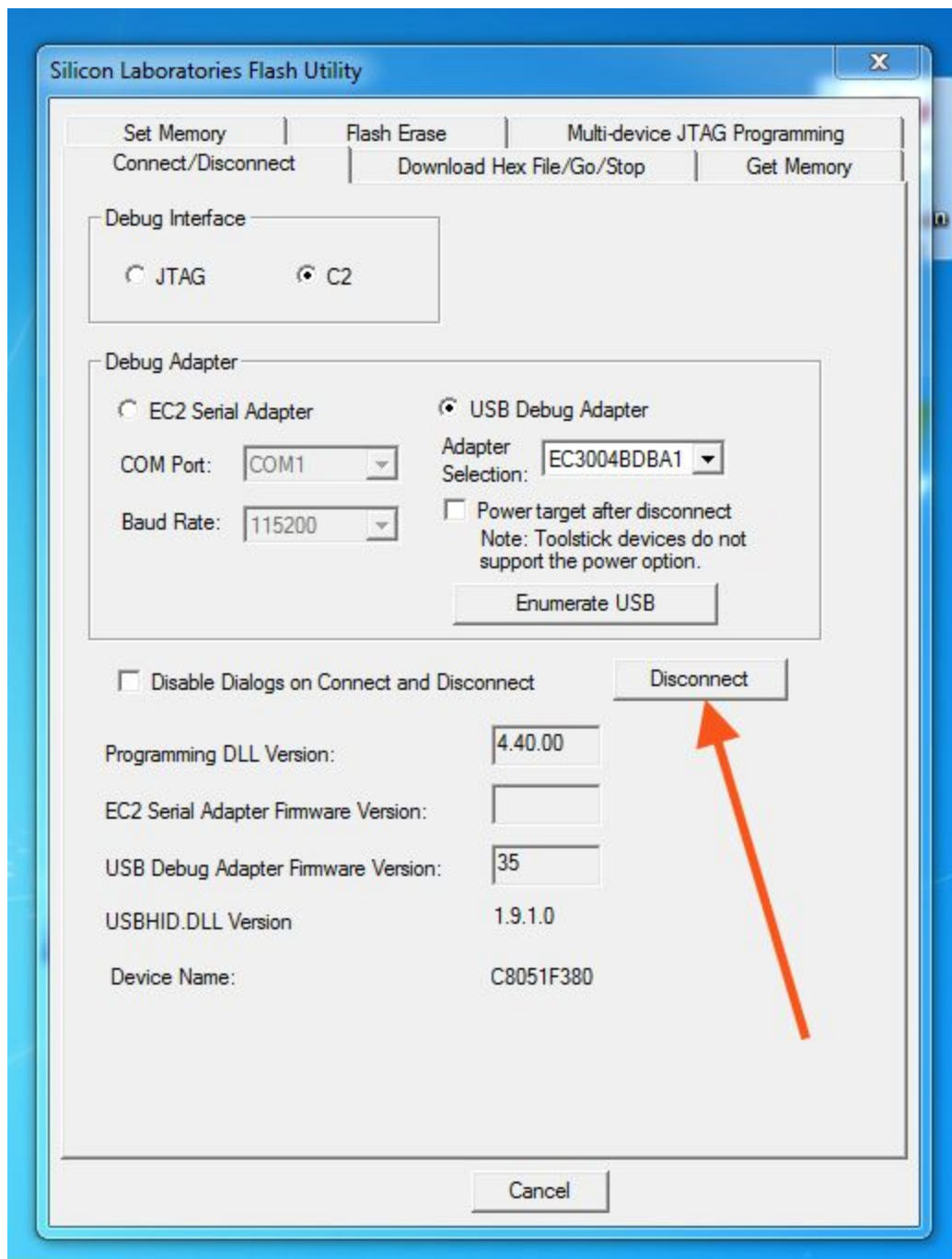






- After the download is complete, return to the “Connect/Disconnect” tab and click “Disconnect.”







Silicon Laboratories Flash Utility

Set Memory

Flash Erase

Multi-device JTAG Programming

Connect/Disconnect

Download Hex File/Go/Stop

Get Memory

Debug Interface

☐ JTAG

☒ C2

Debug Adapter

☐ EC2 Serial Adapter

☒ USB Debug Adapter

COM Port: COM1

Adapter Selection: EC3004BDBA1

Baud Rate: 115200

☐ Disable Dialogs on

Programming DLL Version:

EC2 Serial Adapter Firmware Version:

USB Debug Adapter Firmware Version: 35

USBID.DLL Version

1.9.1.0

Device Name:

C8051F380

FlashUtil



Disconnected

OK

Cancel